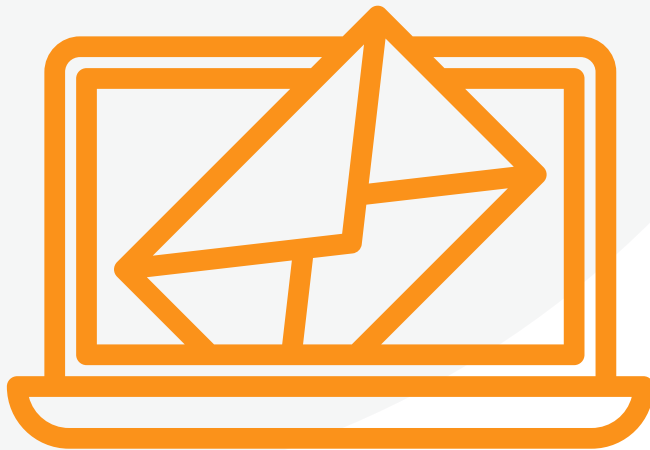


*Solutions***30**

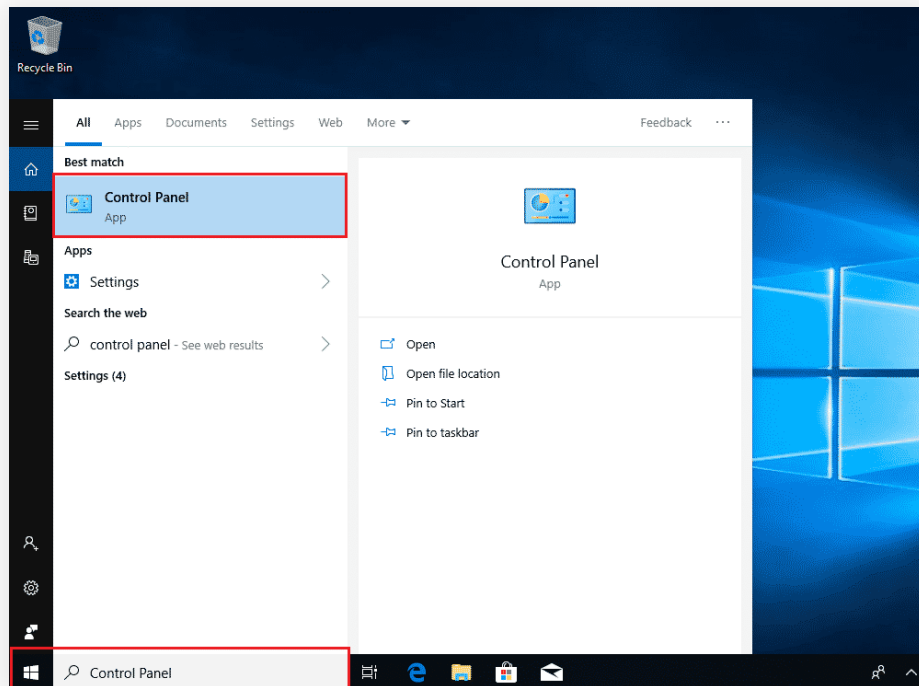
Solutions for New Technologies



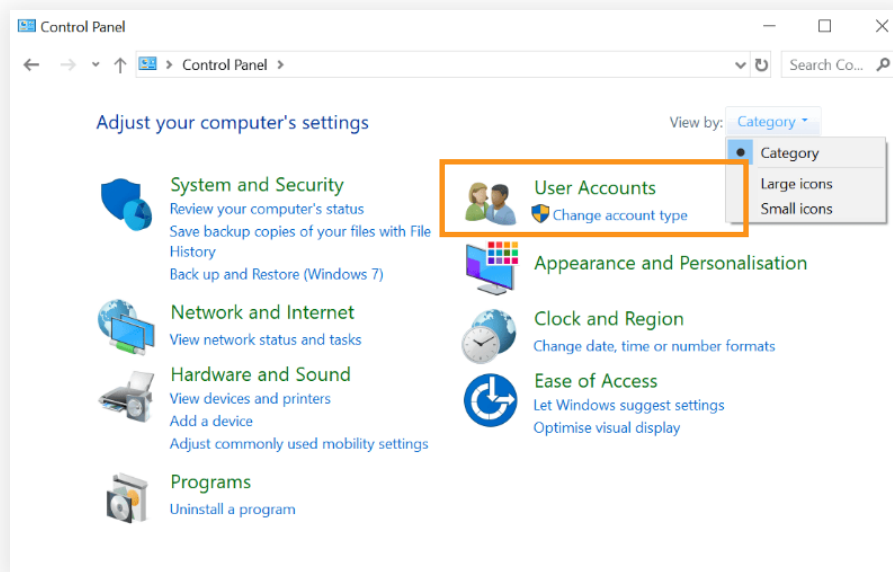
Setting up your **Outlook** mailbox

In order **to access your Outlook app** and find all **your emails**, you must do the following steps.

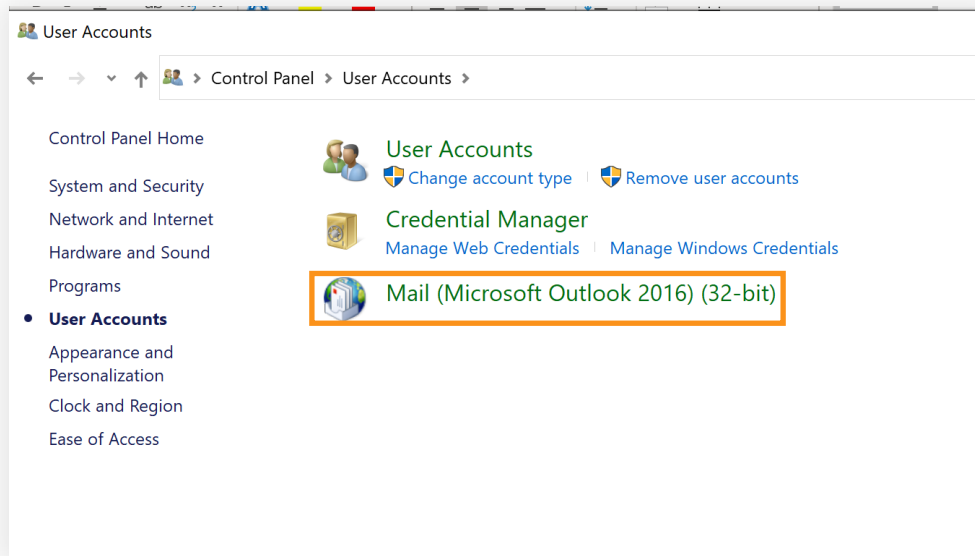
I. Go to the "Control Panel"



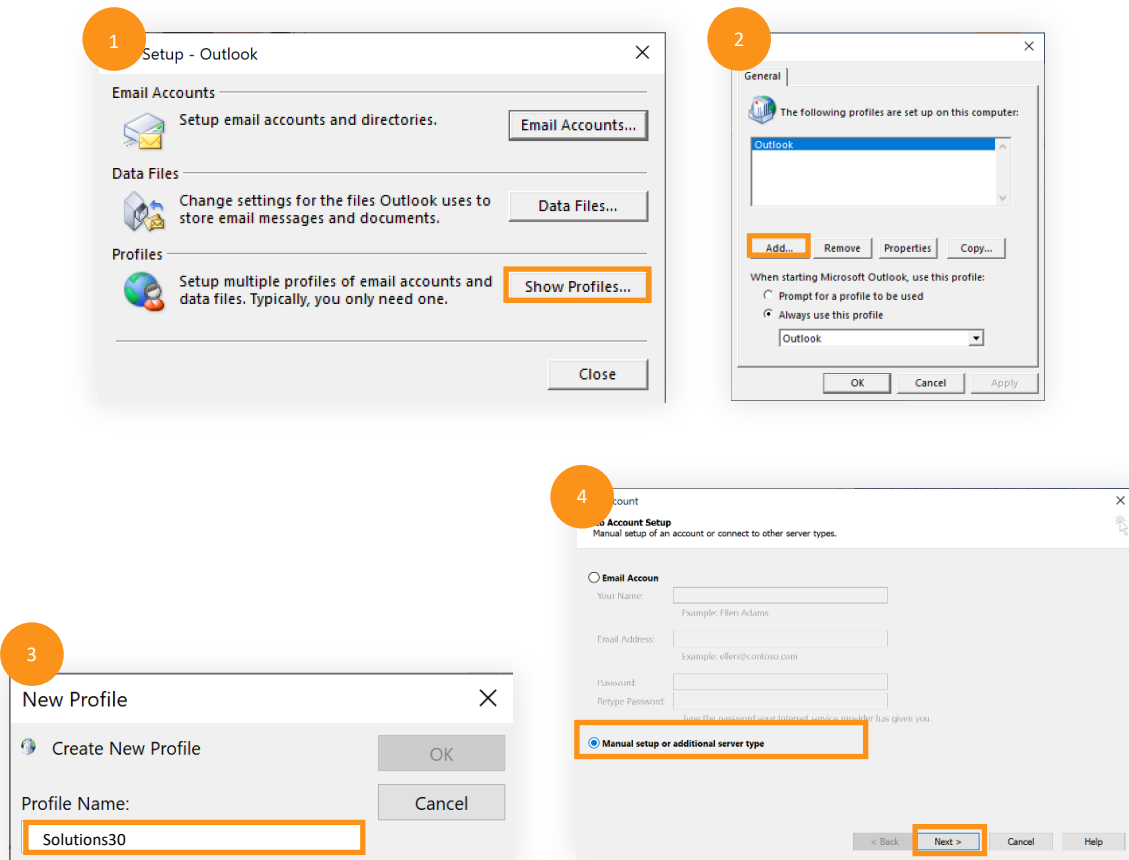
II. Then on "User Accounts"

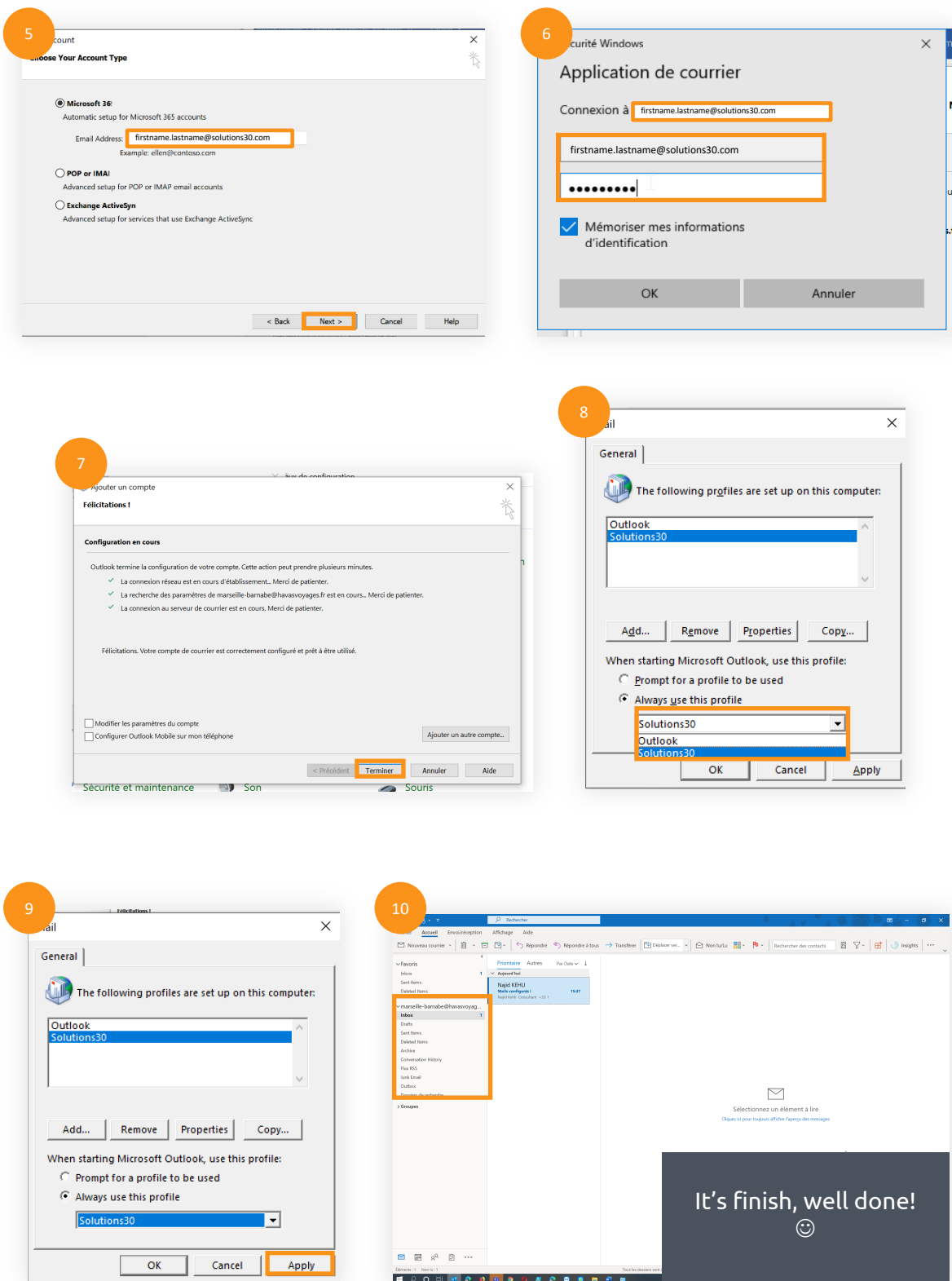


III. Select "Mail (Microsoft Outlook)"



IV. Follow the following steps:





If you have previously exported your mailbox to a local PST archive, attach your archive on your new Outlook profile by double clicking on the PST file from the Windows Explorer.